

# CMTS

# AC RANGE

**Animal Carcass Incinerators**

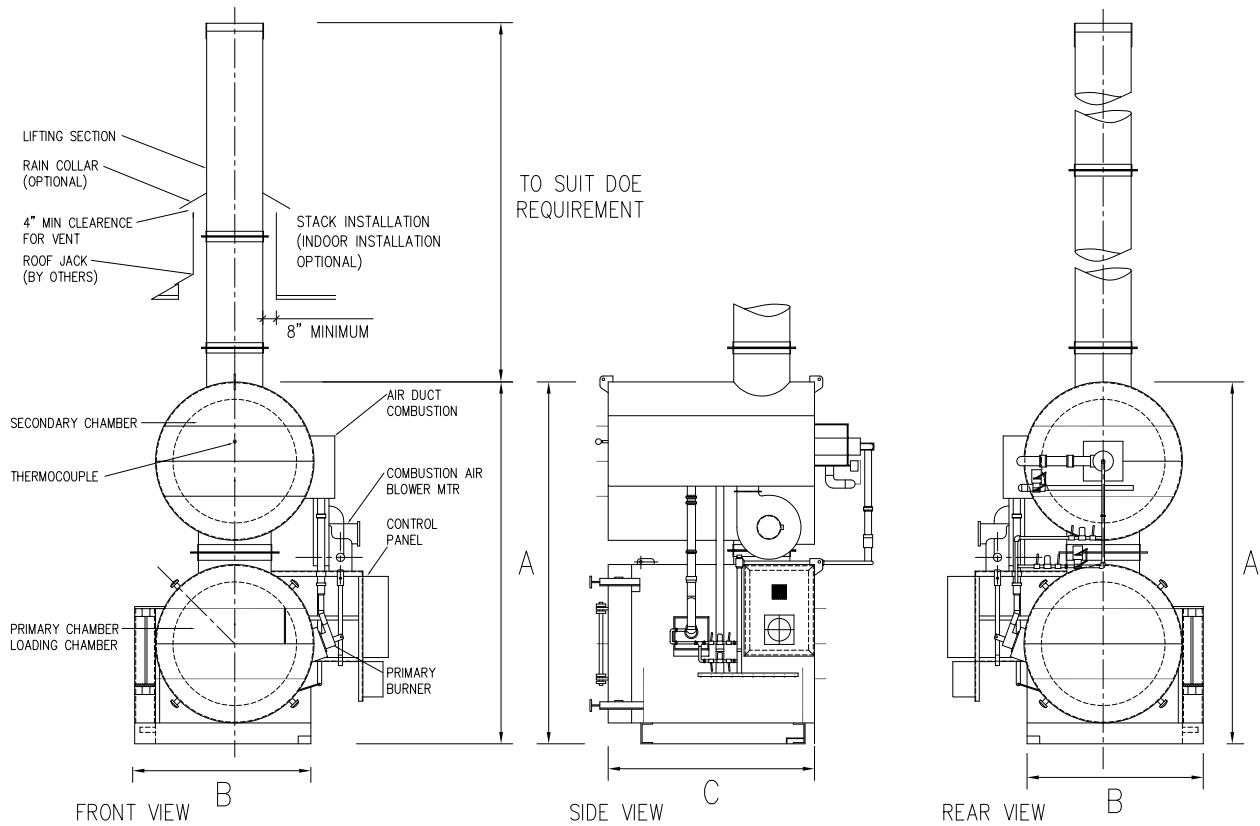
**Capacity : 50 to 250 kg / hr**

**Batch Load Capacity : 200 - 1000kg**



AMUS<sup>TM</sup>

# Layout Plan



Model	Throughput (kg/hr)	Dimension (mm)			Weight (kg)	Fuel Consumption Liter/hr
		A(H)	B(W)	C(D)		
AC 50	50	3050	1800	2750	6800	30
AC 100	100	3660	2150	3100	8000	45
AC 150	150	3660	2150	3800	11000	55
AC 200	200	3700	2200	4300	13000	60
AC 250	250	4450	3050	4300	18000	90

## CMTS Animal Carcass Incinerator

### ~ Fast, complete, efficient waste disposal

CMTS manufactures waste incinerators for the simple, safe and compliant disposal of animal carcasses. Our customers reap the benefits of ease-of-use, low running costs and high efficiency in the disposal of animal carcasses from farms, quarantine centers or veterinary laboratories.

From our service centers in Malaysia and the Netherlands, we serve customers who manage small and large volumes of carcasses across South East Asia and Europe. Our ISO 9001 accreditations guarantee quality and professionalism across our business, from the products we supply to the service we deliver.

Whether you manage poultry, cattle, goats or sheep, our precisely designed incinerators are engineered, installed and supported to meet your specific needs.

- Simple on-site installation
- Easy loading of carcasses
- Efficient, low-cost disposal
- Controlled environmental emissions
- Low maintenance costs

## Features and Benefits

- Multiple layers of insulation to reduce heat loss and provide low casing surface temperature
- Heavy duty solid refractory floor is designed for rugged usage
- Basin type refractory bottom acts as a hearth for waste fluids to collect
- Refractory lined secondary chamber with exit temperatures of up to 1100° C with minimum of 1 second retention time
- No shredding of waste necessary prior to charging
- Automatic control system provides preset burn times and shut off.
- Low fly ash carryover

### Low energy consumption levels

- Digital temperature controls maintain temperature, assuring complete combustion while conserving fuel.
- Pressure blower with air control creates turbulence and distributes combustion air to secondary chamber.
- Secondary burner with temperature activated control provides fast preheat and sustains high temperature performance at low energy consumption levels.