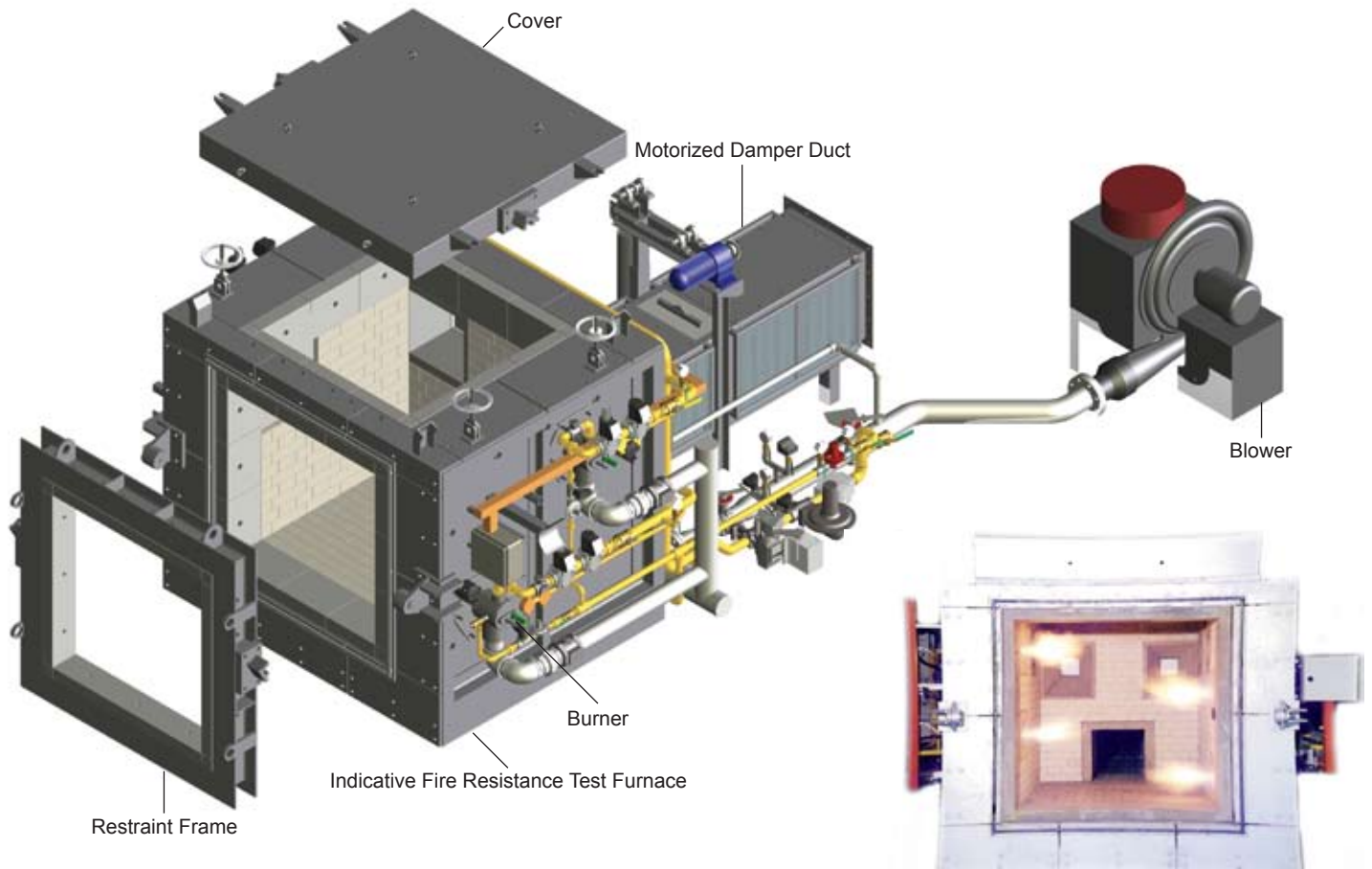


CMOS

INDICATIVE FIRE RESISTANCE TEST FURNACE





INDICATIVE FIRE RESISTANCE TEST FURNACE

Small Scale Indicative Furnace Type 1
(Vertical and Horizontal Specimens)

Measures 1.5 meters x 1.5 meters x 1.5 meters and is used to test dampers, penetration seals, and for pilot testing windows, walls, doors samples and ceilings.

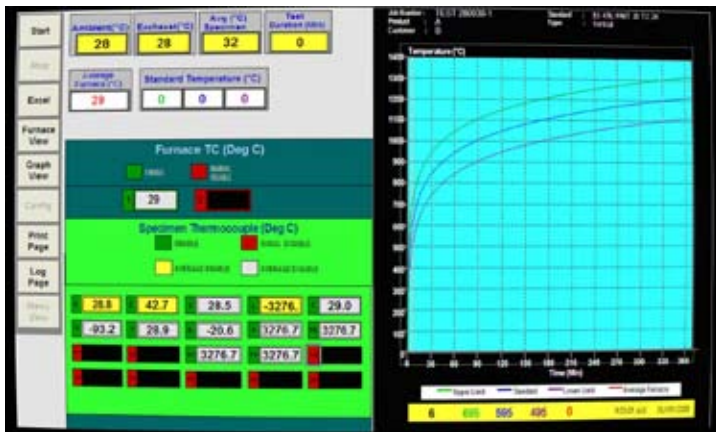
Small Scale Indicative Furnace Type 2
(Vertical and Horizontal Specimens)

Measures 1 meter x 1 meter x 1 meter and is used to test dampers, penetration seals, and for pilot testing windows, walls, doors samples and ceilings.

Fired by liquefied petroleum gas or propane, these furnace are capable of meeting British and American heating curves.

Published British Standards include:

- BS EN 1363-1 General requirements for fire resistance tests
- BS EN 1363-2 Alternative and additional procedures
- BS EN 1364-1 Fire resistance tests - Non-loadbearing walls
- BS EN 1364-2 Fire resistance tests - Non-loadbearing ceilings
- BS EN 1365-2 Fire resistance tests - Floors and roofs
- BS EN 1366-2 Fire resistance tests - Dampers
- BS EN 1634-1 Fire resistance tests - Samples of Fire Doors and Shutters
- BS 476 Part 20 - 22



Combustion Control System, Scada & Data Acquisition System